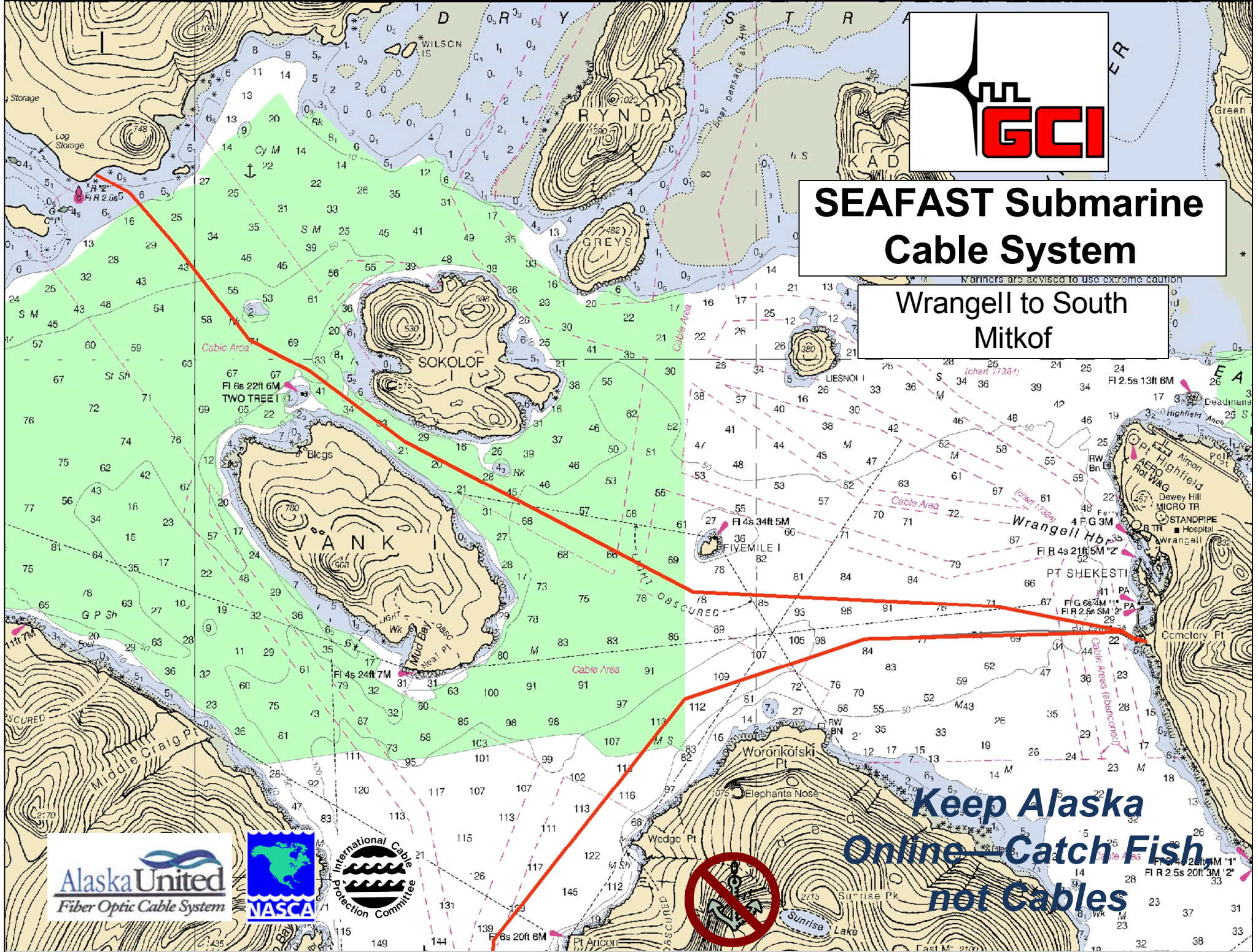




SEAFAST Submarine Cable System

Wrangell to South Mitkof



**Keep Alaska
Online — Catch Fish
not Cables**



Attention Alaska Southeast Mariners

Active FCC licensed
telecommunications cables are located
along the described routes providing
vital communication links for Alaska



GCI			
System Name: SEAFAST			
Wrangell to Mitkoff Island			
Pos. No.	Latitude	Longitude	Fathoms
1	N56 27.2200	W132 23.0400	2
2	N56 27.2617	W132 23.2809	8
3	N56 27.3308	W132 23.4785	19
4	N56 27.4567	W132 24.6594	67
5	N56 27.5697	W132 25.7210	72
6	N56 27.7171	W132 31.1200	74
7	N56 28.4890	W132 33.8007	60
8	N56 29.1976	W132 36.2662	30
9	N56 29.8936	W132 37.9597	62
10	N56 30.2003	W132 39.0295	68
11	N56 31.1948	W132 40.4320	46
12	N56 31.6491	W132 41.1607	26
13	N56 31.8300	W132 41.7600	6

*IF YOU SUSPECT YOUR GEAR or
ANCHOR IS SNAGGED ON THE
SEAFAST CABLE, PLEASE CONTACT
GCI NETWORK OPERATIONS AT:*

1 888 442 8662

or

1 907 265 5555

***Attempting to recover gear snagged
on submarine cables can be lethal!***

*If your gear or anchor does snag something
you think may be a cable, please don't try
to lift it! After some initial slack is taken up,
it may become extremely difficult to lift, and
could threaten your vessel's stability.*

Furthermore, Alaskan submarine cables



may carry over 2,000 volts DC



For Additional Information Contact:

Bruce Rein
5151 Fairbanks Street
Anchorage, AK 99503
Phone: 907 868 8580

